

Tutbury Parish Council

▶ Village Plan

Initial Draft v0.A

November 2023

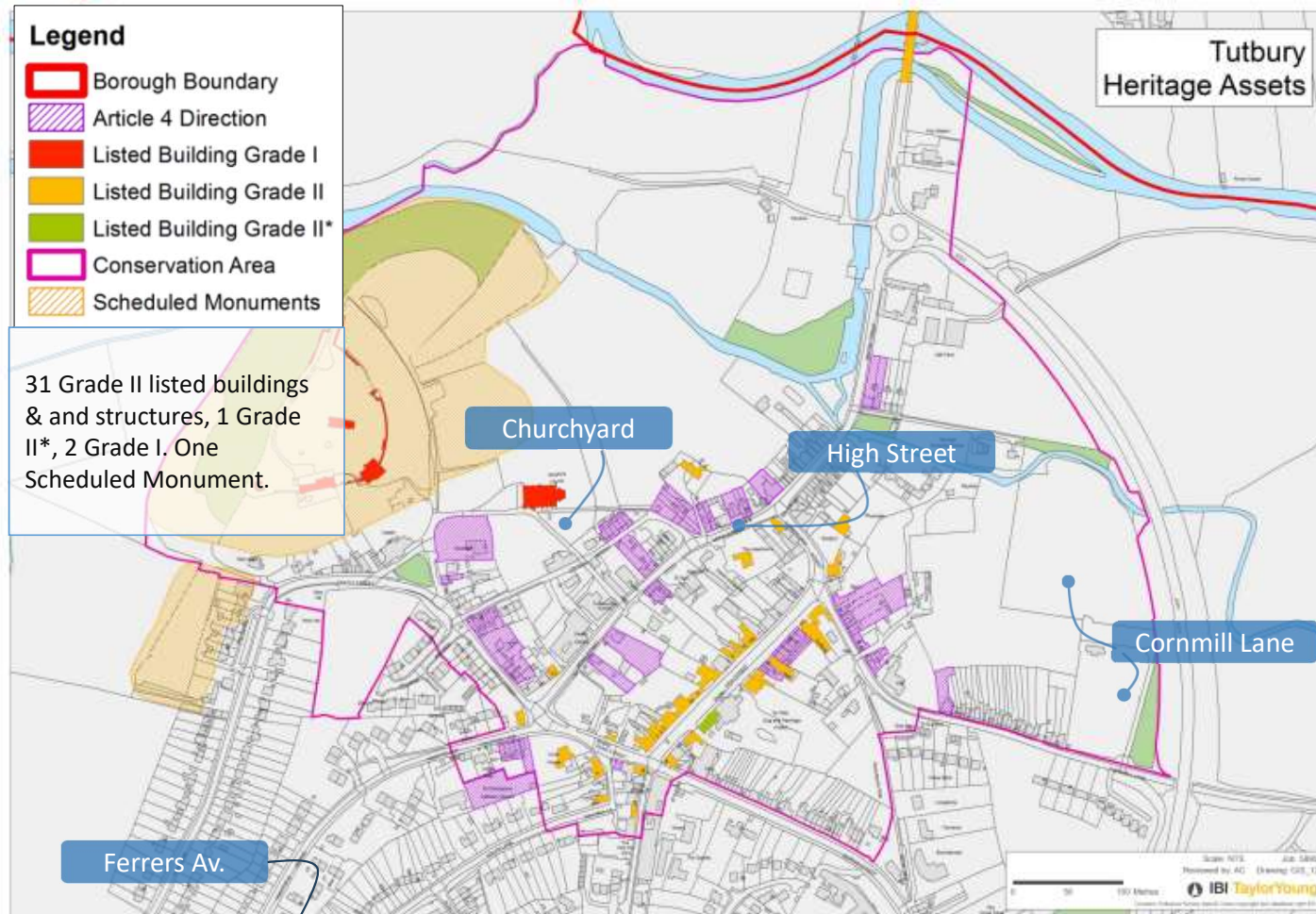
Village Plan ▶ Introduction

Tutbury Parish Council are your civil local authority who are at the lowest tier of local government. Our aims are to represent the village community, deliver services to meet local needs, and improve quality of life and community well-being.

The Village Plan is designed to provide an overview of the services provided and the supporting parish organisation. It also offers a provisional blueprint of improvement ideas for Tutbury which will require consultation with the community to determine priorities.

Village Plan ▶ Current Parish Council Services

The Parish Council administer local services for all of Tutbury which is also a Conservation Area.



Village Plan ► Current Parish Council Services

- Parish Meetings
- Minutes & Reporting
- Quotations, Purchase Orders
- Public Meetings & Communications
- Contracts & Lease Agreements
- ESBC & SCC Interactions
- Accounts & Banking
- Grant Applications

- Public Meetings/ Communication
- Resident Engagement
- Escalation & Issue Resolution
- Grant Awards

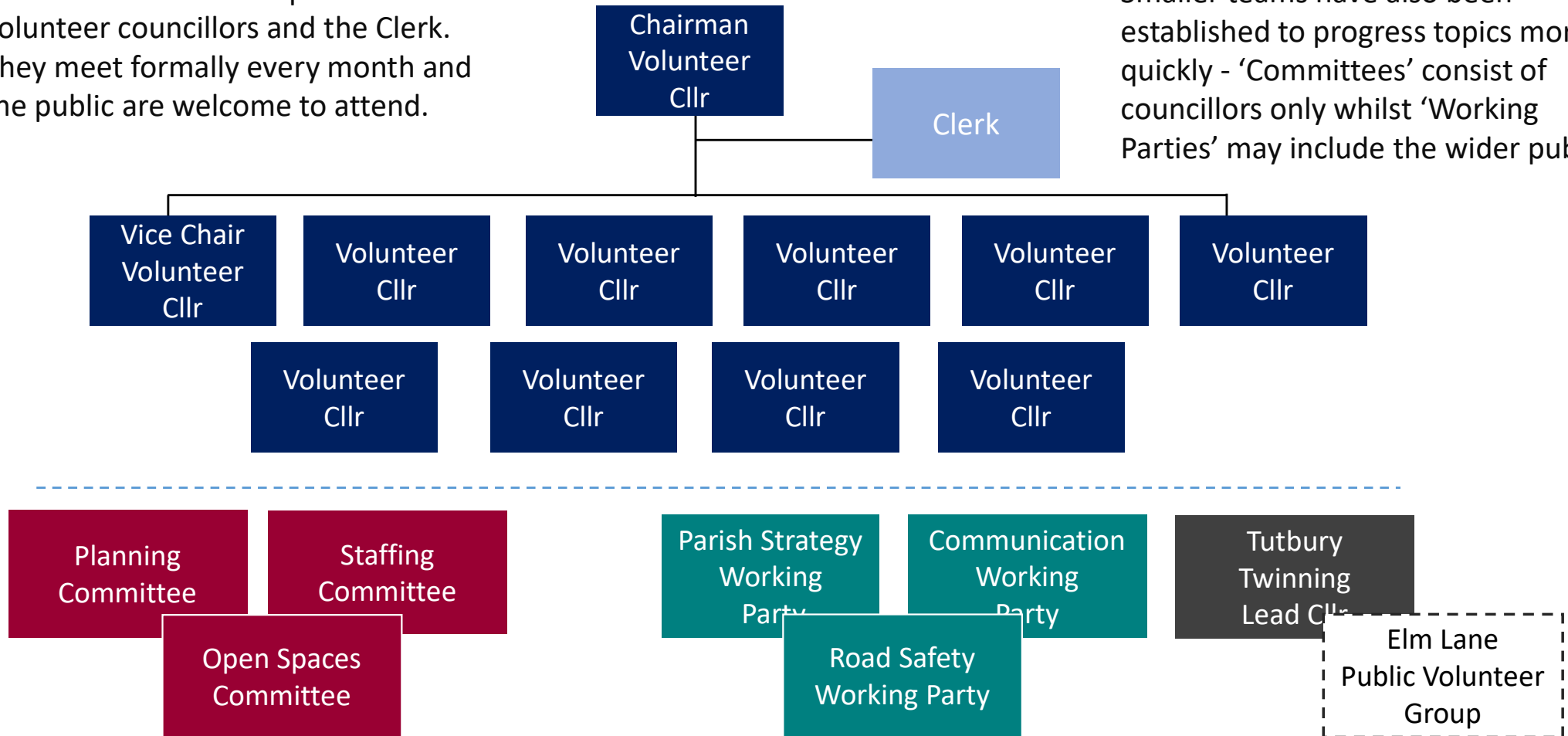
- Planning Consultations
- Street & Bus Shelter Cleaning
- Bus Shelter Maintenance
- Rights of Way Maintenance
- Planter Maintenance

- Mowing Contract Management
- Hedge Cutting / Boundary Repair
- Arboriculture Care
- Changing Room Maintenance
- Churchyard Maintenance
- Triangle Maintenance

Village Plan ▶ Parish Council Governance

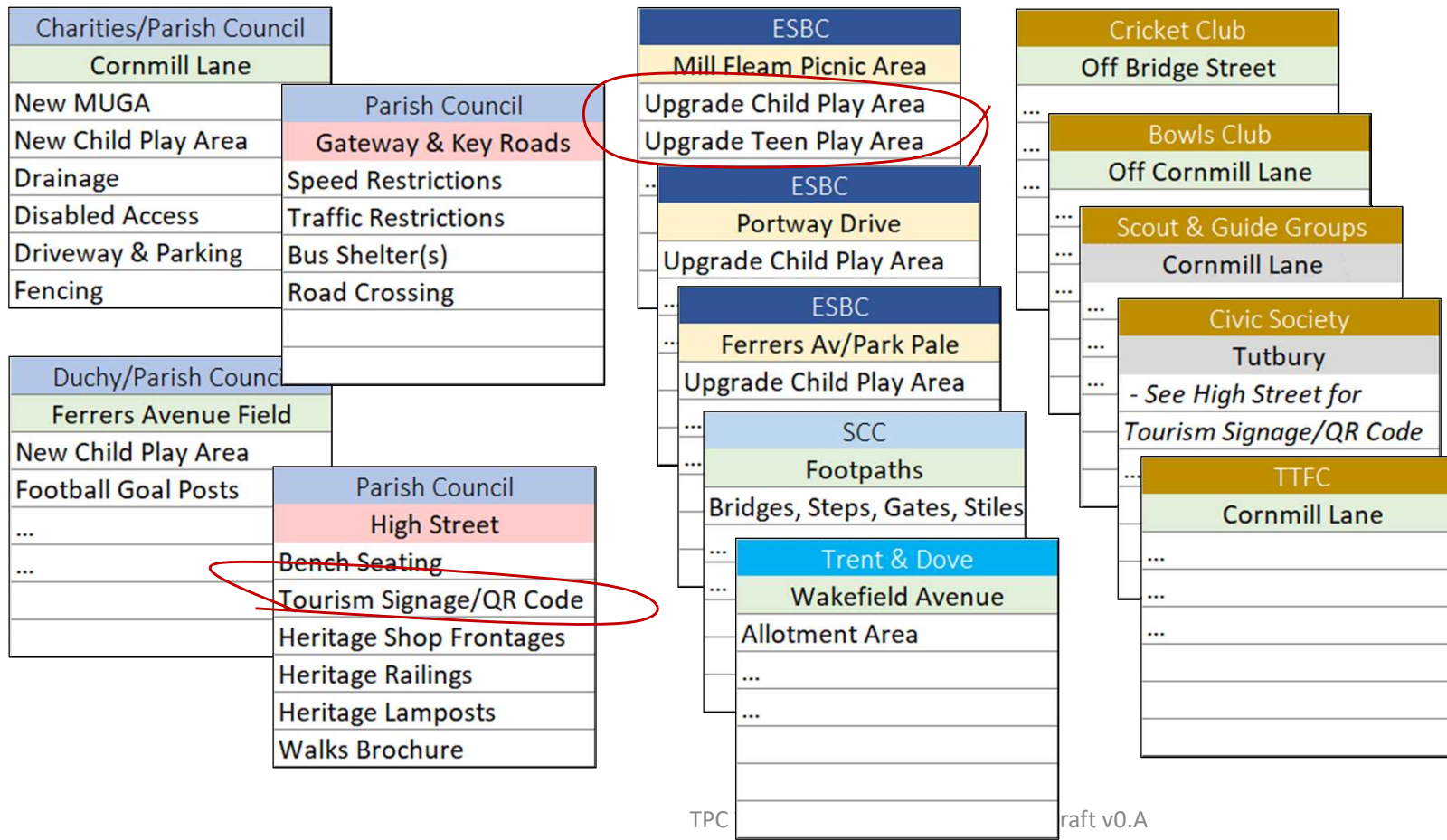
The Parish Council comprises of 11 volunteer councillors and the Clerk. They meet formally every month and the public are welcome to attend.

Smaller teams have also been established to progress topics more quickly - 'Committees' consist of councillors only whilst 'Working Parties' may include the wider public.



Village Plan ▶ Opportunities

There have been a variety of suggestions for improving the village but not all are within the jurisdiction of the Parish Council.

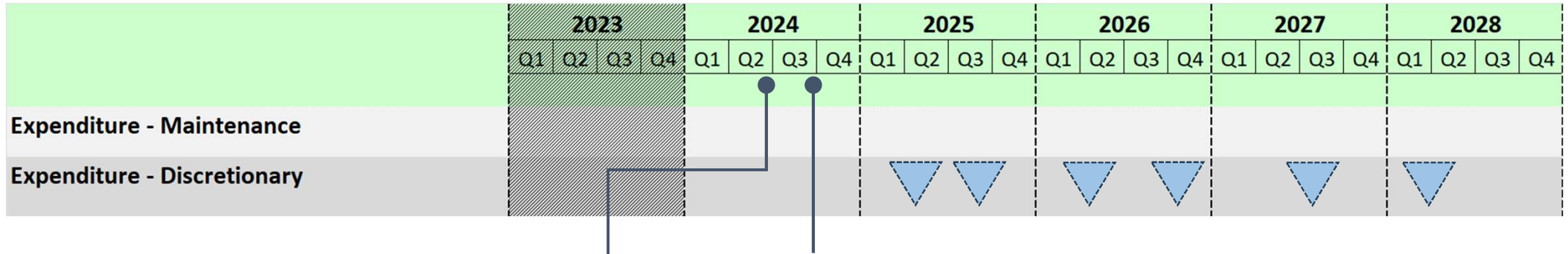


- To formulate a plan, these ideas (and others), need to be prioritised by the community and costed.
- In the short term, owing to the timescales of an ESBC grant scheme, the items circled in red are being included in a grant application(s) being submitted by TPC and the Civic Society.

Village Plan ▶ Finance

	2023				2024				2025				2026				2027				2028			
	Q1	Q2	Q3	Q4	Q1	Q2	Q3	Q4	Q1	Q2	Q3	Q4	Q1	Q2	Q3	Q4	Q1	Q2	Q3	Q4	Q1	Q2	Q3	Q4
<p>Budget TPC receive a budget each year from the 'Precept'. They may also apply for 'Grants'. See description below.</p>	£ Precept				£ Precept				£ Precept				£ Precept				£ Precept				£ Precept			
<p>Expenditure - Maintenance TPC manage non-discretionary or 'fixed' expense each year to maintain property and services. This includes yearly and periodic charges for things such as electricity, grass cutting and bus shelter refurbishment.</p>	£ Maintenance				£ Maintenance				£ Maintenance				£ Maintenance				£ Maintenance				£ Maintenance			
<p>Expenditure - Discretionary Once non-discretionary expenses have been provisioned, TPC may assign budget to initiatives such as commemorative or seasonal events, new street seating or tree planting.</p>	£ Discretionary				£ Discretionary				£ Discretionary				£ Discretionary				£ Discretionary				£ Discretionary			
<p>Precept & Grant Description The principal source of funding for Tutbury Parish Council (TPC) each year is the "Precept". Each household pays Council Tax which is levied by ESBC as the '<i>collecting authority</i>'. A proportion of the council tax, known as the precept, is allocated each year to TPC as a '<i>precepting authority</i>'. Precepting authorities manage local expenditure which is not within the scope of services provided by the collecting authority. TPC seek supplementary investment from other organisations, including but not limited to ESBC, in the form of "Grants". Grants provide an important source of capital for improvement projects within the local community. Grants augment the TPC budget and are applied for on a case by case basis.</p>																								

Village Plan ▶ Priority Setting



TUTBURY PARISH COUNCIL
9 PINFOLD CLOSE
TUTBURY
BURTON UPON TRENT
DE13 9NJ

Clerk Karen Duffill
Telephone 07486 406045
theclerk@tutburyparishcouncil.co.uk
www.tutburyparishcouncil.co.uk

PLEASE HELP US TO HELP YOU
Resident Questionnaire

Dear resident,

TPC formulate plan including;

- Costs
- Budget
- Grants
- Procurement

Progressive Improvement